

Since in 73rd Term, Usual Shareholder's meeting the change in directors has been recognized, so informing about the same. There is no change of an organizational chart in connection with this.

Under the new directors, all the employees who are all together once again ready for the support of customer and contributing towards the society will be further push forward .

Moreover, since group companies' director office period is 1 year, so request you to understand that every year directors will change.

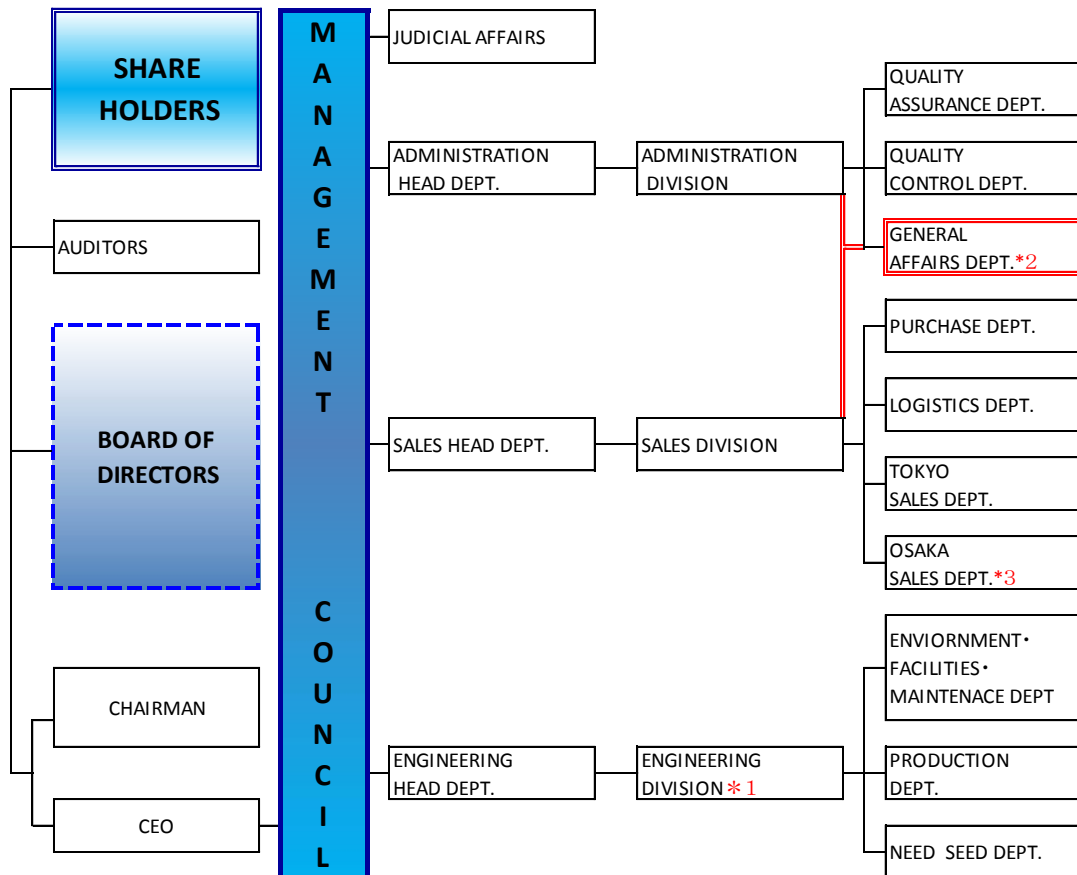
	Name (Date of Birth)	Outline of career, Position, Incharge, and Representation situation of other legal entity, etc.	Ownership Shares of the company
1	Ogura Shoichi (March 15 1929)	March 1949: Joined the Company May 1974 Became CEO of company April 2002 Became Chairman of Company Still continue to be the same (Representative of other legal entities) President of Sanwa oil Engineering Co., Ltd.	272,000 Shares
2	Hironosuke Ogura (11 November 1966)	March 1994: Joined the Company June 2009: Became CEO of Company Presently continue to be same (Representation of other companies) Representative Director :Showa Enterprise Co., Ltd.	70,000 Shares
3	Kunihiko Ogura (1 August 1957)	March 1982: Joined the Company June 2007: Became Director of Company Presently continue to be same (Representative of other companies) President and CEO :Showa Enterprise Co., Ltd.	29,000 Shares
4	Uemura Tsuneo (August 5 1949)	October 1979: Joined the Company May 2010: Became Company's Board of Directors Presently continue to be same	102,000 Shares
5	Yasuhiro Tsuji (August 15, 1956)	March 1981: Joined the Company May 2010: Became Company's Board of Directors Presently continue to be same	1,000 Shares
6	Shinichi Teramoto (25 November 1960)	May 1983: Joined the Company July, 2007: Became Sales department Head Presently continue to be same	0 Shares
7	Koji Ohara (May 2, 1960)	March 1986: Joined the Company July 2007: Became Technical Director, Presently continue to be same	0 Shares
8	Setsuro Miura (July 6 1944)	June 2009: Joined the Company June 2009: Became Corporate Auditor, Presently continue to be same.	0 Shares

Company Profile

2013/05/27

SHOWA KAKO CORPORATION ORGANIZATION CHART

27-May-13



* 1 ENGINEERING DEPT.

* 2 GENERAL AFFAIRS DEPT.

* 3 President Special Appointive

Safety and Sanitation is also manage by engineering dept.

Periodical factory inspection is performed once a month with officer, Board of directors, adviser, and the member selected by the company.

General affairs dept., manage both sales as well as administration dept.

In Osaka Sales Department there are Special appointive.